



office building

Geo Milev Distr.

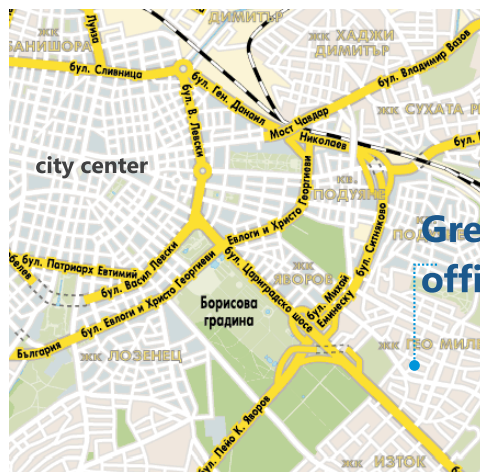
located in very prestigious and quiet district, opposite Ministry of Foreign Affairs and between two embassies

luxury finished common parts with granite, PHILIPS Savio lighting systems on every floor

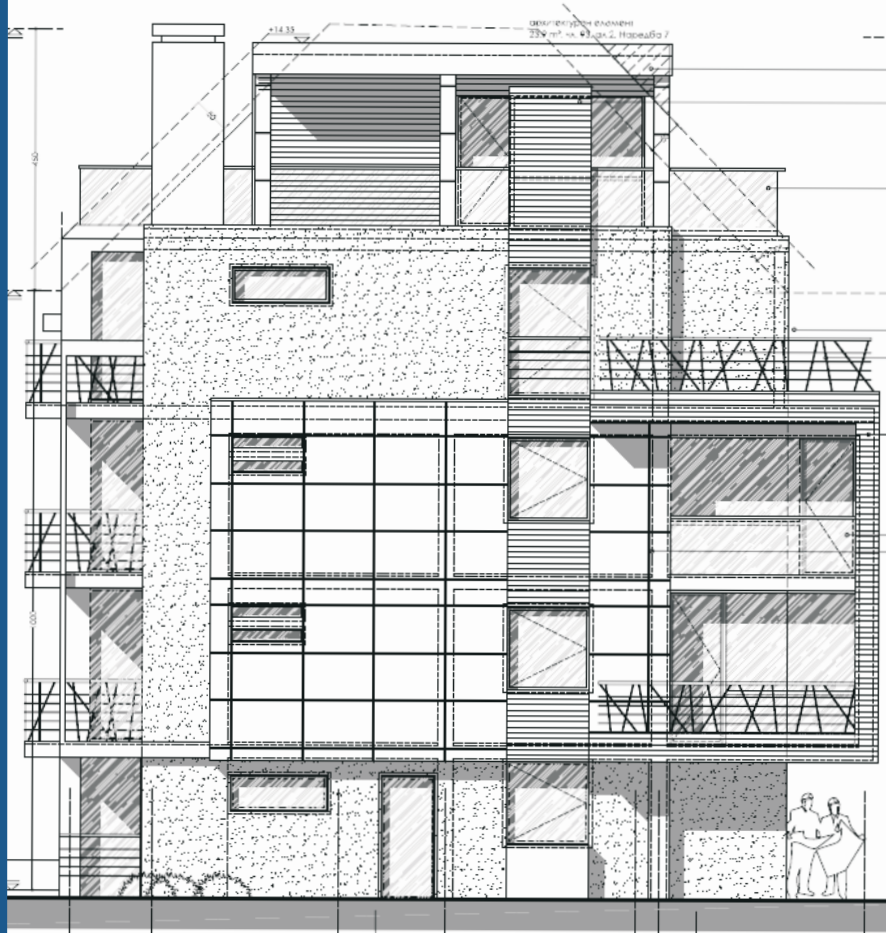
class A building including access control system, fire alarm system, structural cable system cat.5E/UTP

modern air conditioning system DAIKIN VRV III RXYQ18P7W1B and separate ventilation system

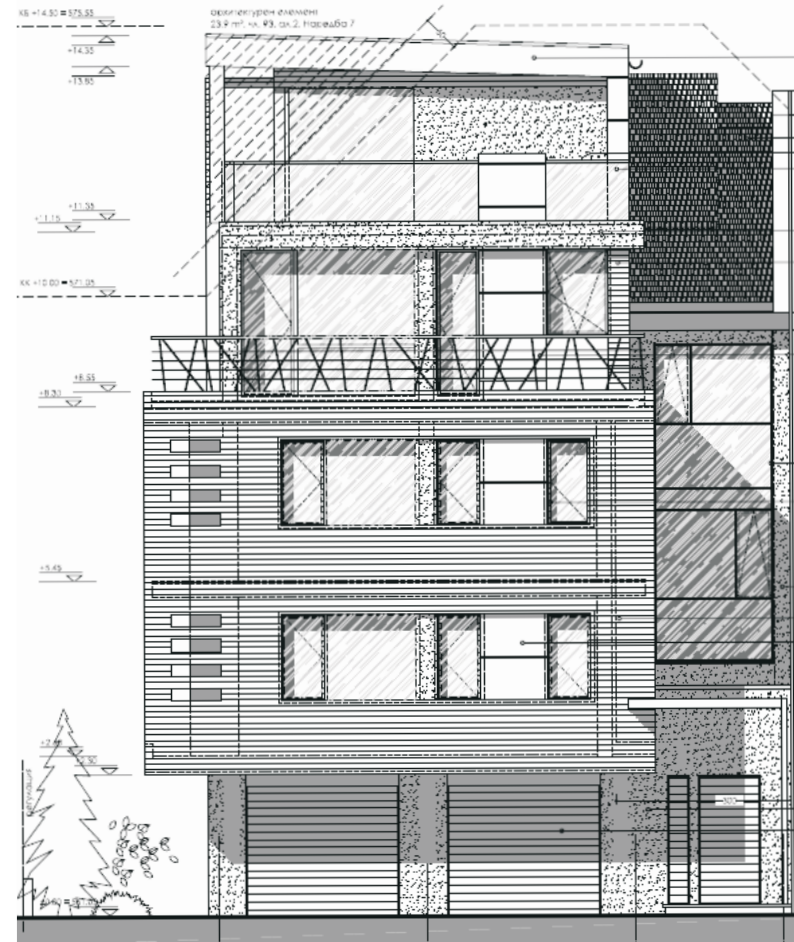
lease: 18E/m2



for rent



- Plot area: 226,00 m²
- Build up area: 122,30 m²
- Gross build up area : 579,20 m²
- Underground area: 125,70 m²
- Total build up area: 704,90 m²
- Green area: 68,30 m²

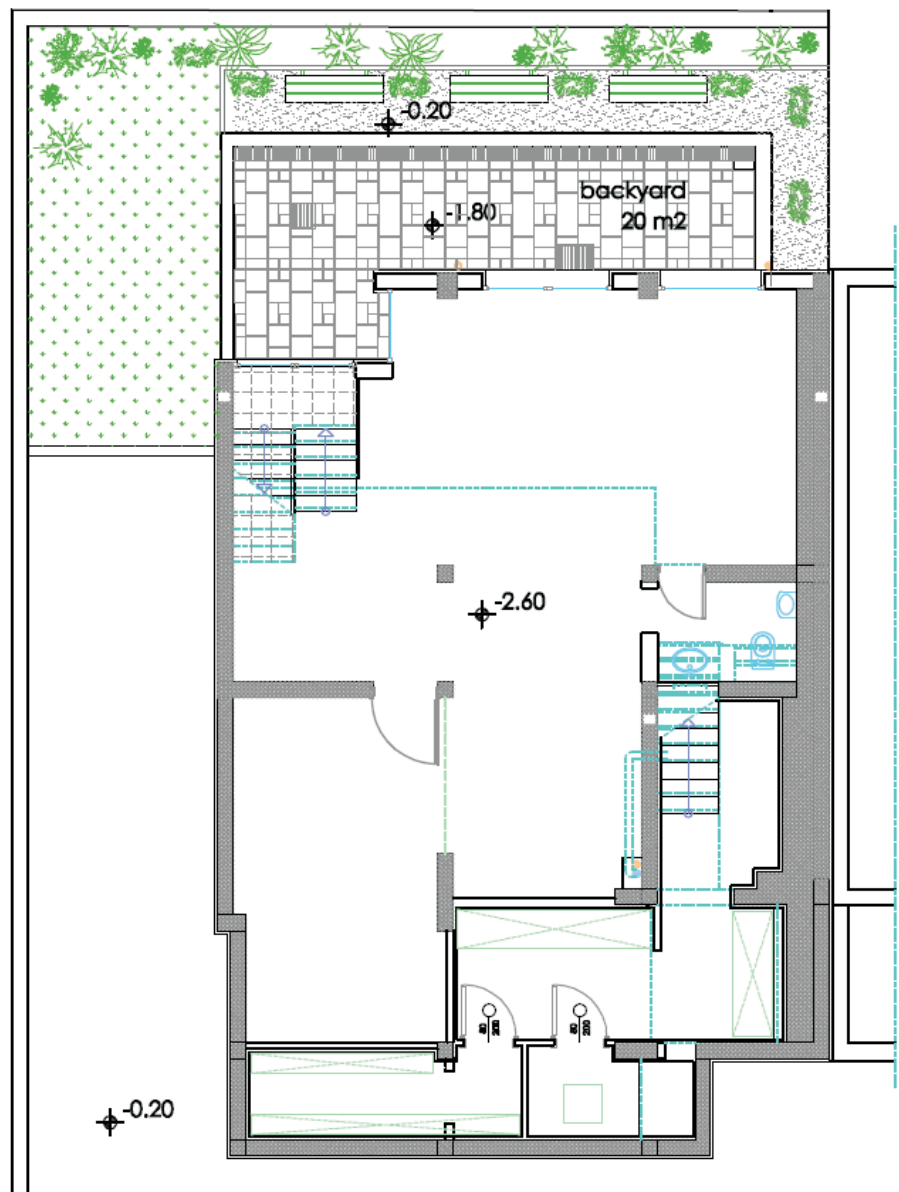


GREENFIELD

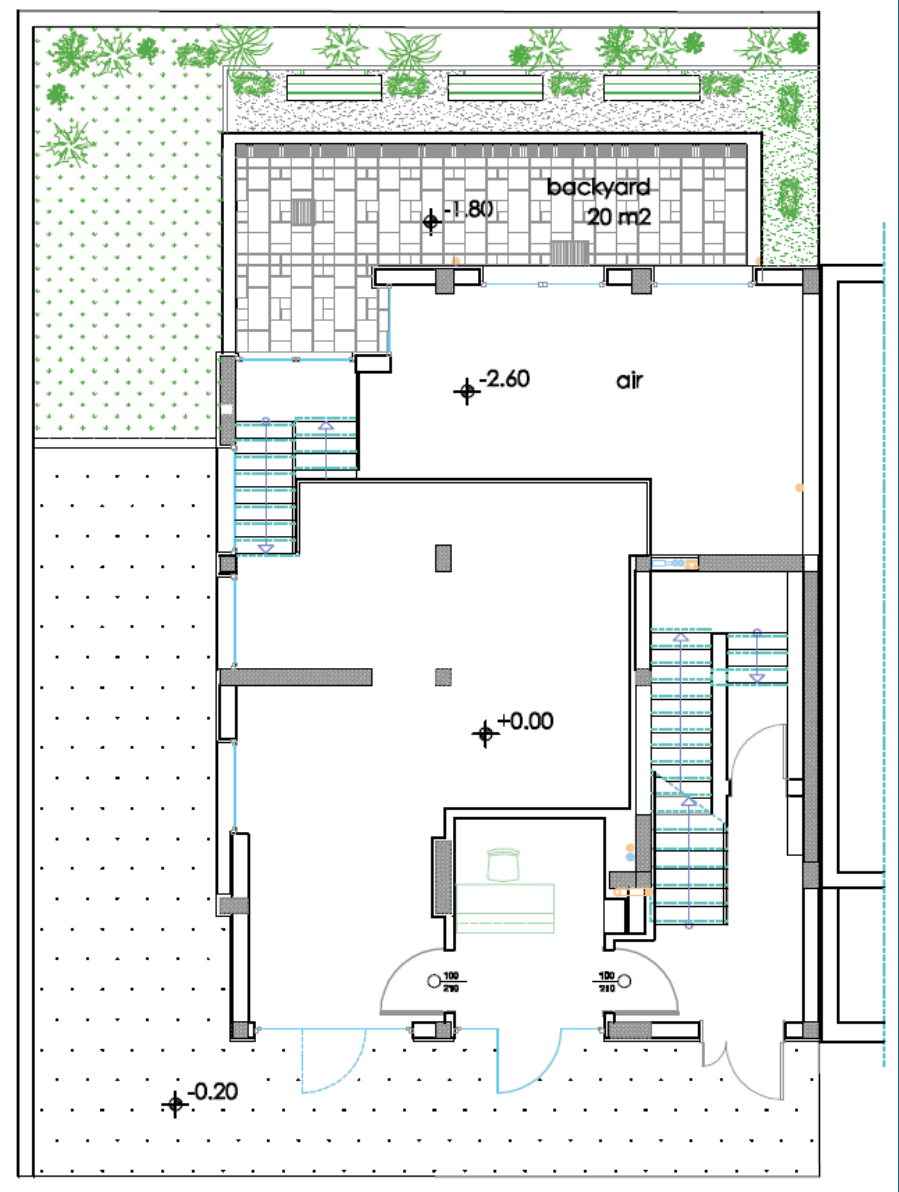
www.greenfield.eu.com

+359 (2) 984 84 84

office@batesimoti.com



basement level -2.60
area: 122.50 m²



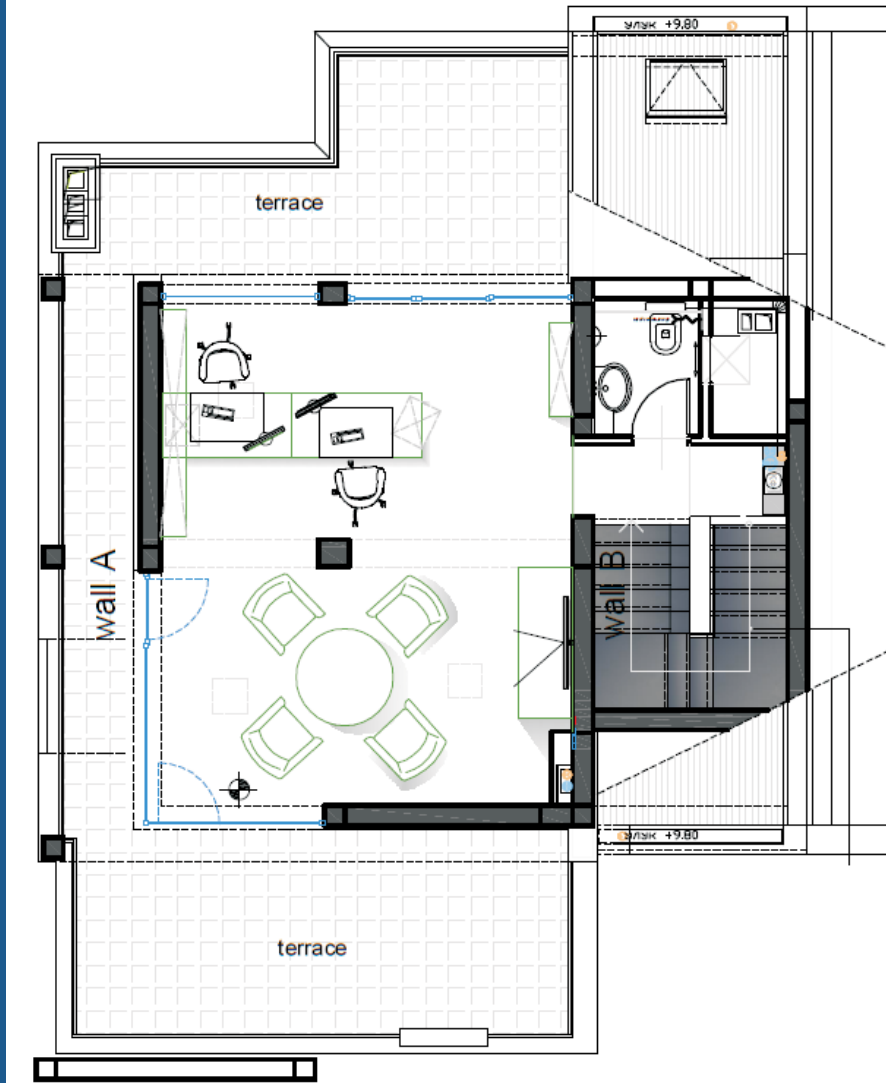
ground level +0.00
area: 98.60 m²



1st and 2nd typical levels +2.60, +5.40
 area (+2.60): 130.80 m²
 area (+ 5.40): 129.30 m²



third level +8.30
 area: 129.30 m²



fourth level +11.150
area: 131.70 m2

